

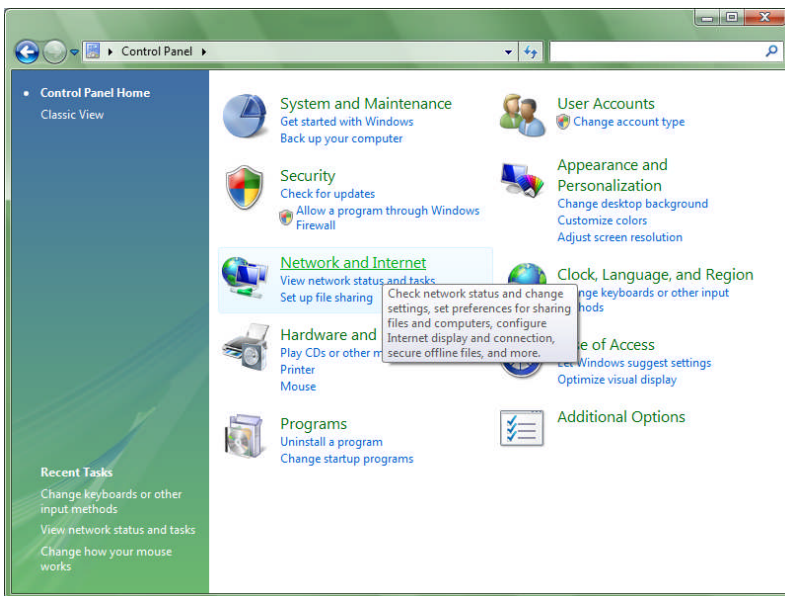
Changing dial-up or a static IP connection to a PPPoE connection

WINDOWS VISTA (all editions)

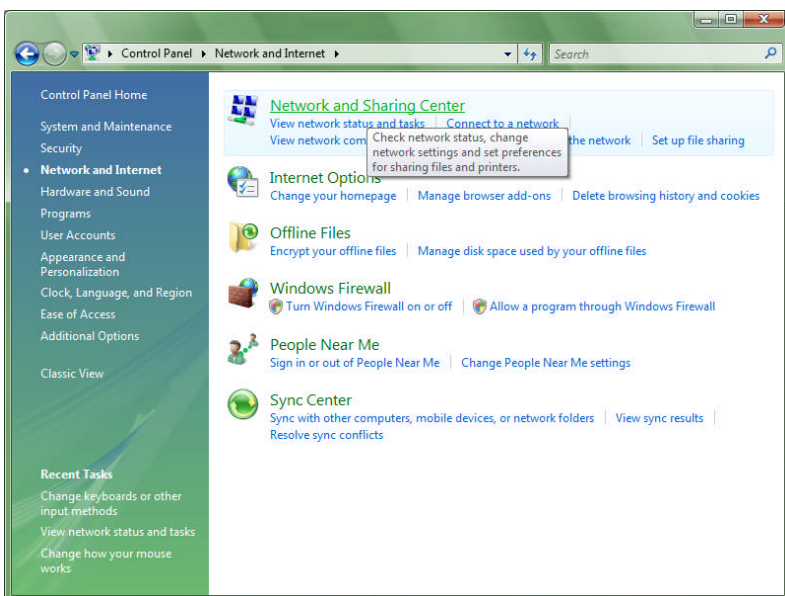
This document will guide you through creating a PPPoE connection to get you connected on the Netspeed network. The old static IP connection method will cease to function on the 1st of July 2009, so it is important to implement this change at your earliest convenience.

Any options you are required to click on are written **IN BOLD>**

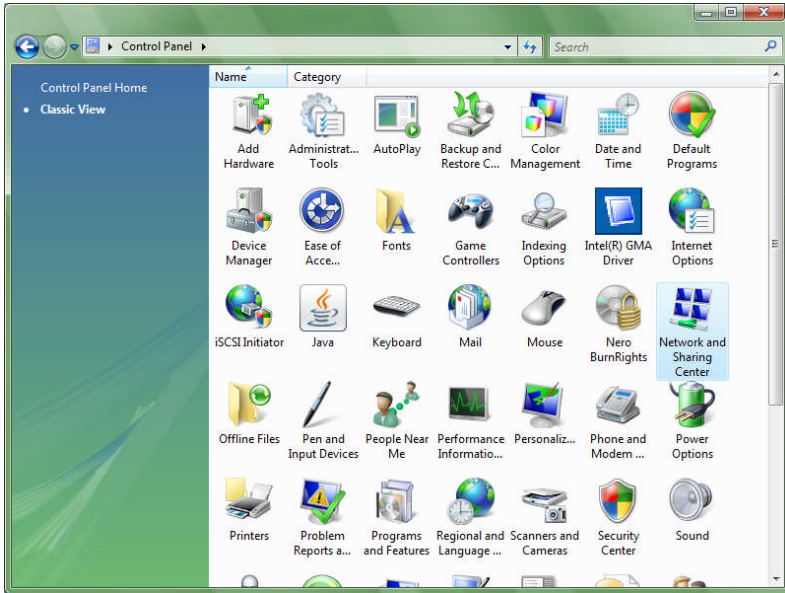
OPEN THE CONTROL PANEL, AND CLICK **NETWORK AND INTERNET**



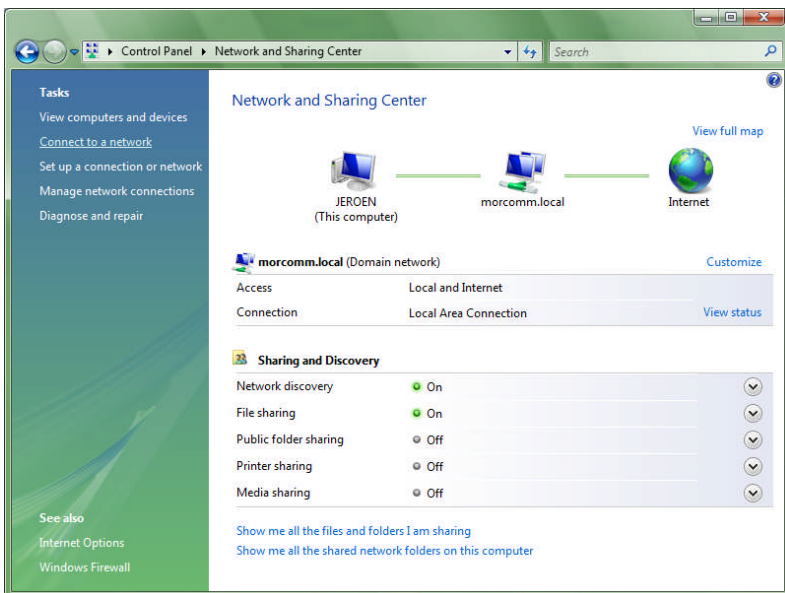
THEN CLICK **NETWORK AND SHARING CENTRE**



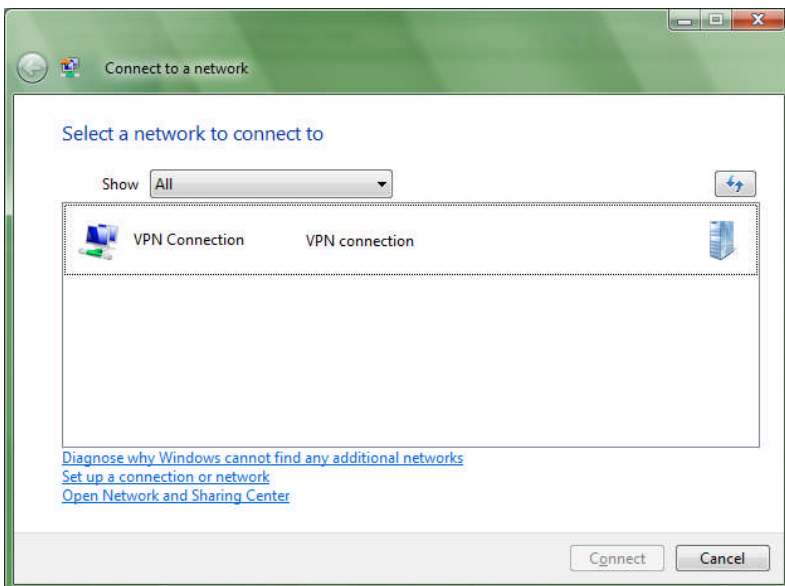
IF YOU ARE USING THE CLASSIC VIEW, JUST GO STRAIGHT TO THE **NETWORK AND SHARING CENTRE**



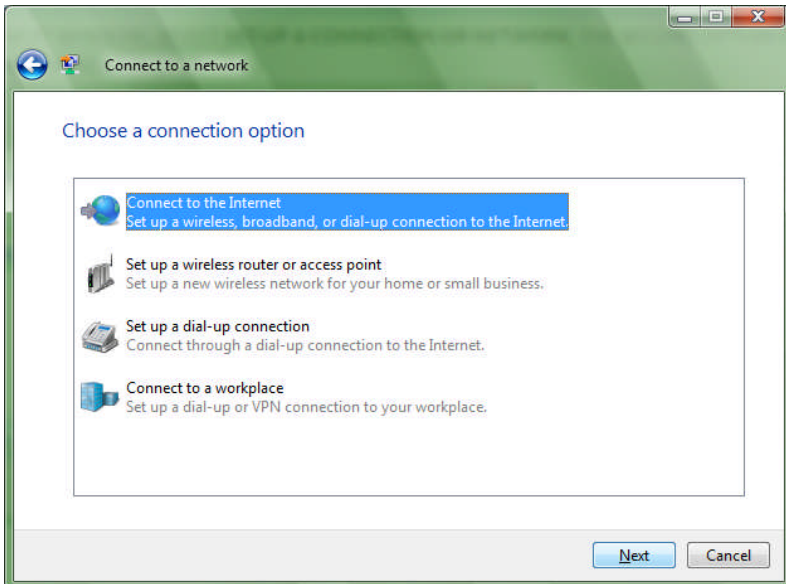
CLICK **CONNECT TO A NETWORK** IN THE TOP LEFT CORNER



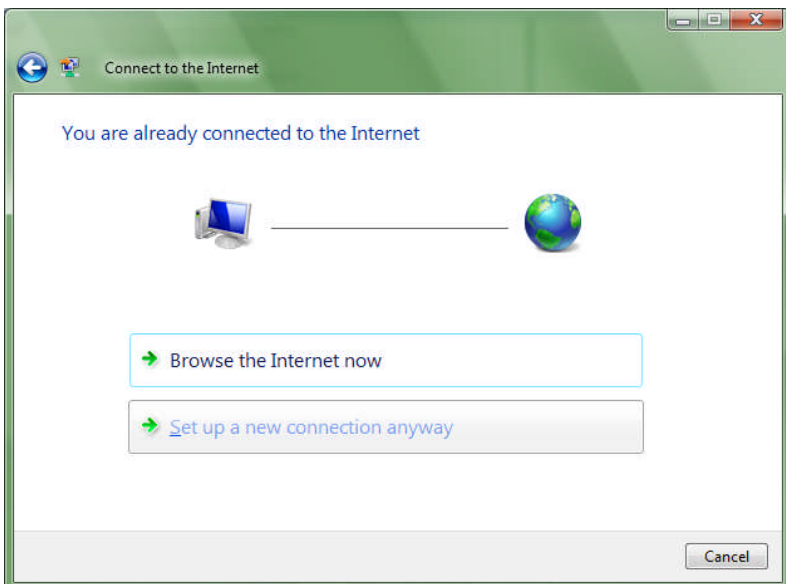
IN THE NEXT WINDOW, SELECT **SET UP A CONNECTION OR NETWORK**, THE SECOND OPTION IN THE BOTTOM 3 OPTIONS IN BLUE.



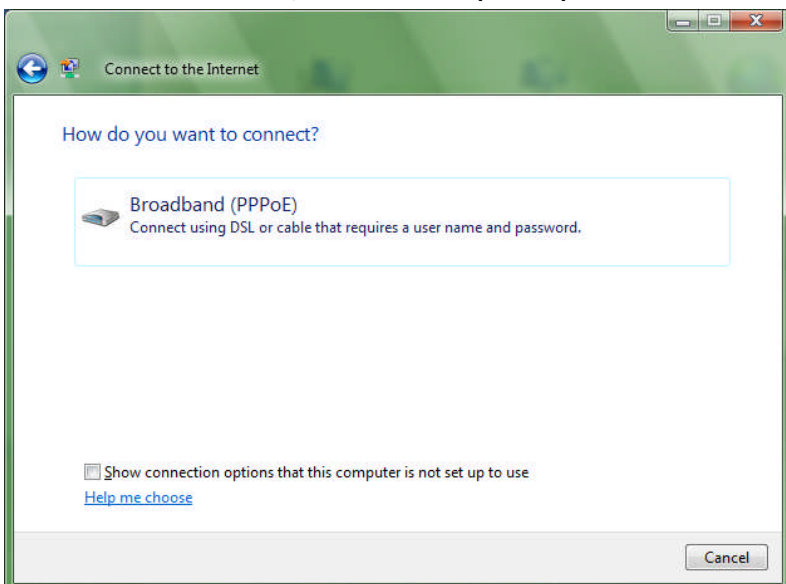
MAKE SURE THE TOP SELECTION IS HIGHLIGHTED (**CONNECT TO THE INTERNET**) AND CLICK **NEXT**



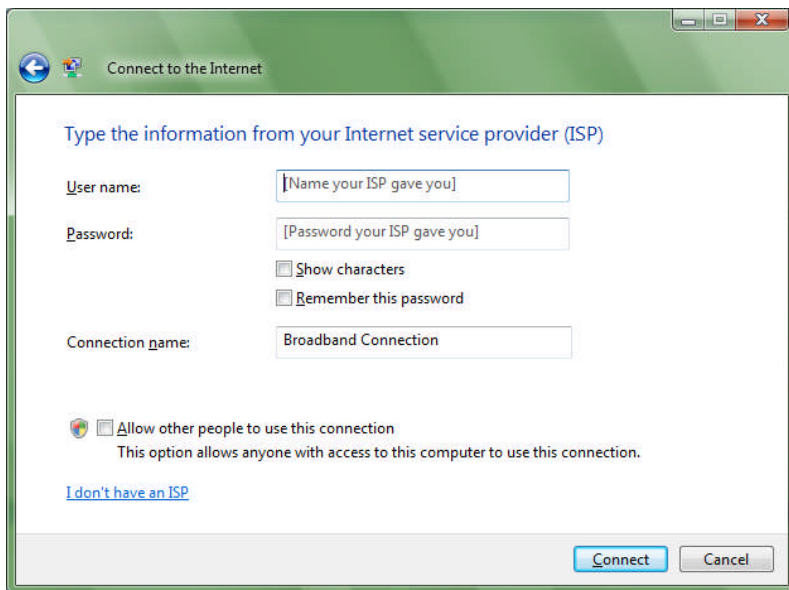
IF YOU ARE ALREADY CONNECTED TO THE INTERNET (AS MOST OF THE TIME THE CASE WILL BE) A DIALOGUE BOX WILL COME UP EXPLAINING YOU ARE ALREADY ON THE INTERNET. GO AHEAD AND CLICK **SET UP A NEW CONNECTION ANYWAY**.



CLICK THE ONLY OPTION, **BROADBAND (PPPoE)**

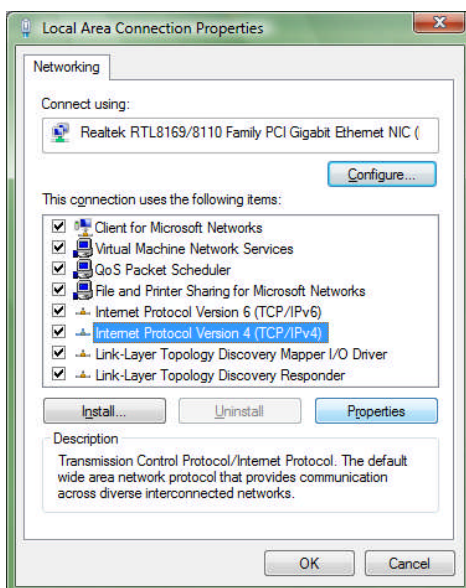


ON THE NEXT SCREEN, SET YOUR USER DETAILS, SELECT THE TICK BOX TO REMEMBER YOUR PASSWORD, AND THE CONNECTION IS SET UP.



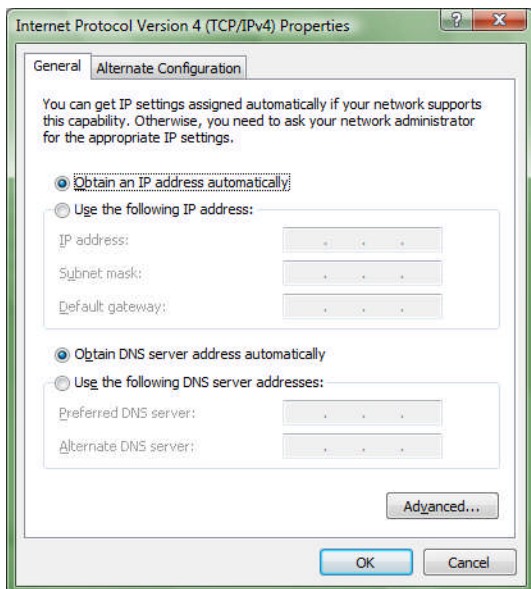
IF YOU HAVE MULTIPLE USER ACCOUNTS ON THE PC, TICK THE BOTTOM OPTION TO ALLOW THE OTHER USERS TO USE THE INTERNET.

YOU WILL ALSO NEED TO SWITCH YOUR IP ADDRESS TO DHCP. THIS IS DONE BACK IN THE NETWORK AND SHARING CENTRE (SEE THE FIRST STEP), AND WHEN IN THE NETWORK AND SHARING CENTRE, SELECT **MANAGE NETWORK CONNECTIONS**. **RIGHT CLICK** THE LOCAL AREA CONNECTION, AND CLICK **PROPERTIES**. **SELECT INTERNET PROTOCOL VERSION 4** AND CLICK **PROPERTIES**.



PLEASE NOTE DOWN THE CURRENT IP ADDRESS, SUBNET MASK, GATEWAY AND DNS SETTINGS ON A PIECE OF PAPER. THIS WAY, SHOULD SOMETHING NOT WORK FOR YOU, UNTIL THE 1ST OF JUNE YOU WILL BE ABLE TO GET ON LINE AND CONTACT US FOR HELP.

GO AND SET BOTH THE IP AND DNS TO OBTAIN AN ADDRESS AUTOMATICALLY



CLICK **OK** AND JUST EXIT YOUR WAY BACK TO THE DESKTOP.

YOU WILL NOW BE ABLE TO ESTABLISH A CONNECTION TO THE INTERNET VIA PPPoE.

ANY PROBLEMS, PLEASE CONTACT MORCOMM SYSTEMS ON 03 434 1221